

Quick

*Delivery!*



**6 Lancaster Drive  
Sheldon Hills**

**\$382,130**



*Purchasers can make all interior selections*

*The Hampton I*

*1786 sf, 2 Bedrooms, 2 Baths, Home Office*

- Maintenance Free Living with resort like amenities
- Upgraded exterior to stone accent in lieu of brick and full stone front at Bedroom #2
- Gas Fireplace with marble surround
- Optional angled bump out bay at Bedroom #2
- Media niche above fireplace with receptacle & cable outlet
- 9' foundation walls with walk-out basement including large gliding windows and slider & roughed in plumbing for full bath
- ±18'x16' screened porch
- Upgraded front door
- Upgraded HVAC
- Central air conditioning
- In-ground sprinkler system
- Security package
- 5,600 sf Clubhouse with heated inground pool and fitness center
- Tennis courts, putting green and walking trails

**The Rubinger Team**  
518.373.2122  
rubinger@capital.net



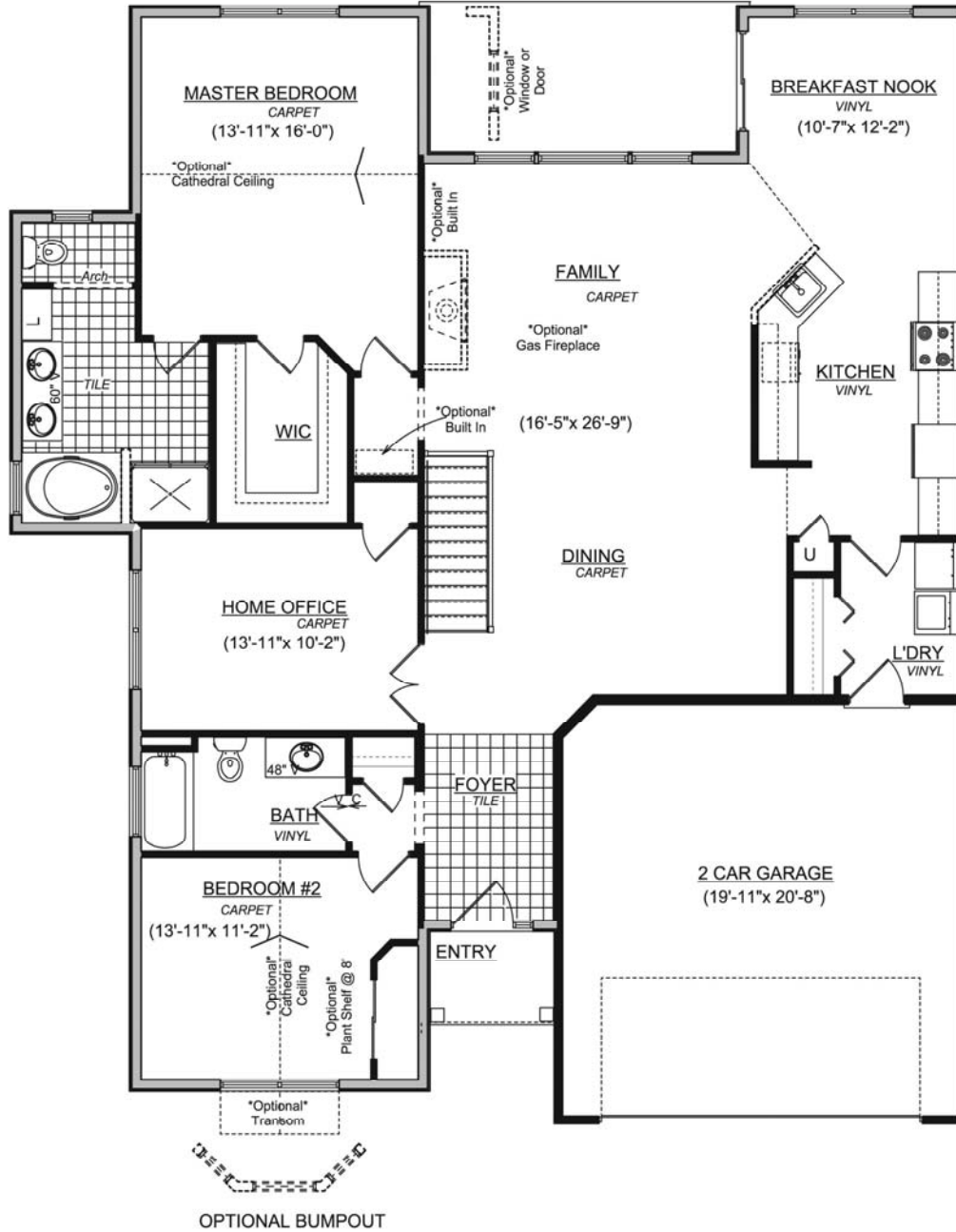
**ABELE BUILDERS, INC.**



\*Price includes standard features.

# The Hampton

1786 sf, 2 Bedrooms, 2 Baths, Home Office



**The Rubinger Team** 518.373.2122  
rubinger@capital.net www.rubinger.net

