

Covington Drive Limited Series QUICK DELIVERY



**33 Covington Drive
Sheldon Hills**

\$298,500*

(*Includes over \$18,000
in free upgrades)



The Brighton

+/- 1450 sf, 2 bedroom, 2 bath (with garden level basement)

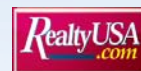
- Maintenance free living with resort-like amenities
- Open floor plan with spacious family room
- Garden level basement with 3 large windows, perfect for additional living space
- Hardwood floors in Kitchen, Dining Area and Hallway
- Maple cabinets with crown molding in Kitchen, tile backsplash, pendant lights over island
- Custom paint package
- Built-in cabinet with adjustable shelves at side of fireplace
- Upgraded light fixtures and wall to wall carpet
- Walk out bay at Master Bedroom
- Maple vanity in Master Bath and Main Bath
- Central air conditioning
- In-ground lawn sprinkler system
- Security package



ABELE BUILDERS, INC.
www.sheldonhills.com



Price includes Limited Series standard features

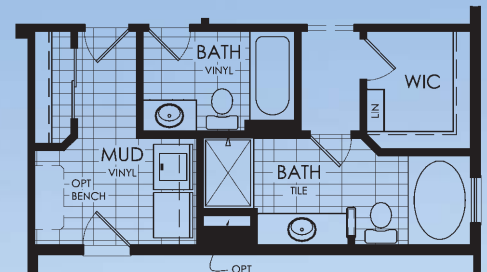


Call the **Rubinger Team**
518.373.2122



Covington Drive Limited Series

QUICK DELIVERY



FLOOR PLAN

TOTAL LIVING AREA: 1,450 SF